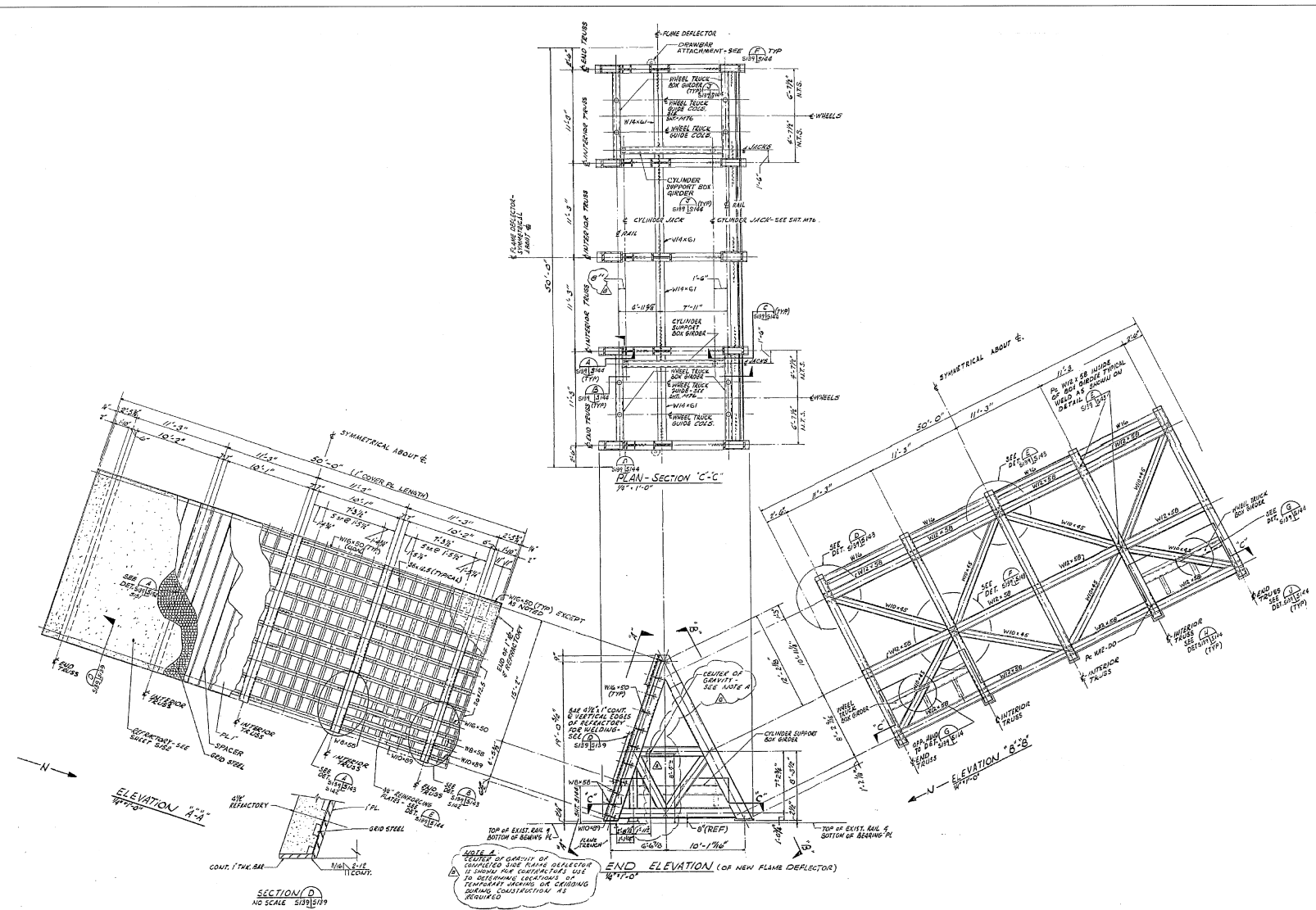
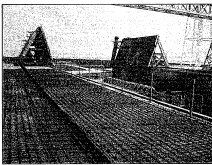


NOTICE: When Government drawings, specifications, or other data are used for any purpose other than in connection with a definite United States Government procurement operation, the United States Government thereby incurs no responsibility or obligation whatsoever, and the fact that the Government may have furnished, or in any way supplied by, the Government, specifications or other data is not to be regarded by implication or otherwise as in any manner assuming the liability for any other person or corporation, or covering any patent or invention to which the use of such data may be related.

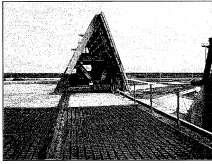


SFD PLAN, ELEVATIONS AND NOTES

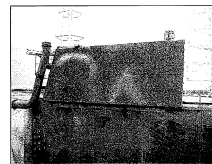
NTS - SOURCE FILE 79K10338 SHEET S139



EAST AND WEST SFD (LOOKING NORTH)



WEST SFD (LOOKING NORTH)



EAST SFD FACE (LOOKING NORTH)

THIS SPACE RESERVED

SIG.	ZONE	DESCRIPTION	DATE	APPROVED
REVISIONS				
THIS DRAWING CREATED IN AUTOCAD 2007 FILE FORMAT AND WILL BE REVISED ONLY ON AN AUTOCAD SYSTEM. FILE: 14060006-033.DWG				

JONES EDMUNDS
 730 NE WALDO ROAD, GAINESVILLE, FLORIDA 32641 / (352) 377-9881
 3915 S WASHINGTON AVE, SUITE 210, TITUSVILLE, FLORIDA 32780 / (321) 269-2950

SIGNATURES	DATE	NATIONAL AERONAUTICS AND SPACE ADMINISTRATION
DRAWN: S. HAFERKAMP	06/24/09	JOHN F. KENNEDY SPACE CENTER, NASA KENNEDY SPACE CENTER, FLORIDA
CHECKED: S. BHIDE	06/24/09	LAUNCH COMPLEX 39B, DEMOLITION OF FSS/RSS AT LAUNCH COMPLEX 39B, DEMOLITION PACKAGE
DESIGNED: N. PONTILLO	06/24/09	SFD PLAN ELEVATIONS AND NOTES
SUBMITTED: JFP	6/24/09	

APPROVED:	DATE:	SIZE:	DWG. NO.:	REV:
[Signature]	6/24/09	F	222W2200001	
TITLE:		PROJ. NO.:	88880	SHEET 88

S73